

# securityProbe 5E + Camera Bundle

An IP Network based Camera Security and Environmental Monitoring Solution

The securityProbe 5E when connected to our external Pan Tilt Dome Camera, becomes an IP Network based Camera Security and Environmental Monitoring Solution. The securityProbe 5E integrates over 10 years of environmental monitoring experience with the latest high resolution CCD technology.

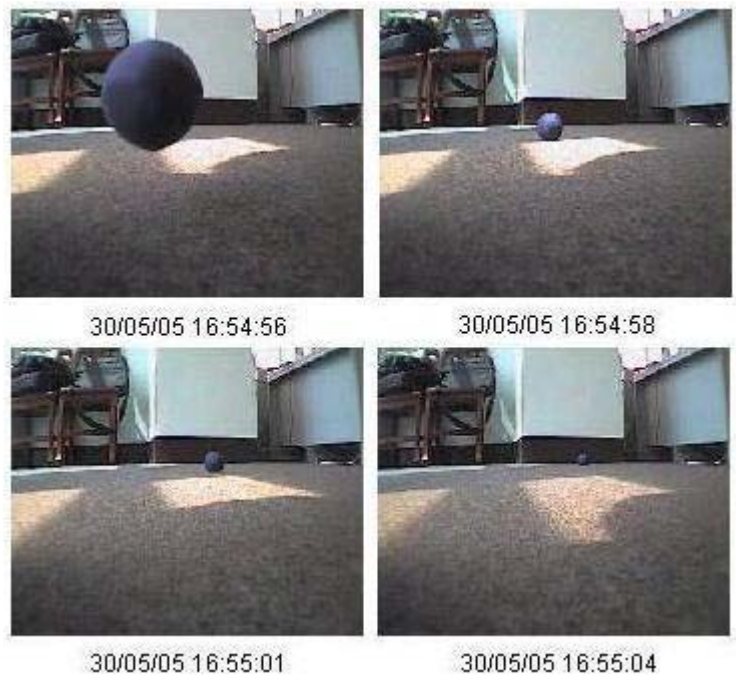


Now you can sense and see problems before they lead to business disruptions.

## External Pan Tilt Dome Camera



The AKCP Pan Tilt Dome Camera is designed to provide greater functionality to the securityProbe 5E range of devices. Not only can you monitor assets and infrastructure remotely, combining the AKCP PTDC Camera with a securityProbe allows you to actually see any problems, from anywhere in the world.



4 pictures per event are saved in the log when the event occurs

The AKCP PTDC is designed around a high resolution CCD camera from Sony. The pictures are truly stunning even in low light conditions. The camera features AWB (Auto White Balance), and has a horizontal resolution of 640 pixels per line, with 625 lines (interlaced). The sensor is a 1/3" interline CCD. It has excellent low light sensitivity of 0.5 lux at f1.2.

Live full-color streaming video is available at up to 30 fps (320 x 240 resolution) via the web interface, and up to 50 streams of video can be accessed simultaneously. Standard JPG format pictures are used, allowing the use of third party host tools to store and analyze the JPG pictures. All pictures are in the Standard JPG format and the Standard CIF picture size is 352 x 288 pixels or VGA (640 x 480). The pictures can be easily downloaded from the securityProbe into a local host.



The BNC video input and PT controller connectors

## External Pan Tilt Camera Specifications

### Camera Control

- Remote pan and tilt (remote 330deg pan, 80deg tilt)
- Control of camera motor via web-interface (administrator only)
- Camera control port PT1-4, Pelco D RS485, 2 pins Terminal box.
- Precision, custom designed stepper motor

### Physical and Environmental

- Dimensions (Ø x H): 10.7 x 11.5 cm
- Weight: 0.8 kg
- Power: 9VDC, external
- Power consumption: 2.16 W
- Operating temp. range: 0 - 40 °C
- Operating humidity range: 10 - 80 % RH, non-condensing

### Image Sensor for Pan Tilt Dome Camera (PTDC)

- High quality Sony CCD
- Light sensitivity of .5 lux at f1.2
- 1/3" interline CCD
- Auto White Balance
- 640 pixels per line, with 625 per frame (interlaced)
- Electronic Iris: 1/50 - 1/100,000 (PAL); 1/60 - 1/100,000 (NTSC)
- Picture Elements: 640 (H) x 480 (V)
- S/N ratio: 45dB or more (AGC off)

### Optics

- Lens type: fixed
- Focal length: 3.6mm
- Viewing angle: 92 deg

### Connections

- Video: BNC Male video composite out 1 Vp-p 75 ohm
- Power: 2.1mm Male plug

## securityProbe 5E + Camera Bundle Options.

Description	Product Code
securityProbe 5E + 1 Pan Tilt Dome Camera	SC1-PAL
	SC1-NTSC
securityProbe 5E + 2 Pan Tilt Dome Cameras	SC2-PAL
	SC2-NTSC
securityProbe 5E + 3 Pan Tilt Dome Cameras	SC3-PAL
	SC3-NTSC
securityProbe 5E + 4 Pan Tilt Dome Cameras	SC4-PAL
	SC4-NTSC

### Corporate/ Registered Office

#### AKCP Co., Ltd.

Office 9A Wang Dek Building,  
19/1-2 Vibhavadi Rangsit Road,  
Jatujak, Bangkok,  
Thailand. Zip Code : 10900

☎ : +66-2-617-8998

### Philippines Development Center

#### iSensors Inc.

Jose Abad Santos Ave.,  
Bldg. 18-A Berthaphil 1,  
Clark Freeport Zone, Clarkfield,  
Pampanga, Philippines 2023

### Support Team

General Info: [info@akcp.com](mailto:info@akcp.com)

Sales: [sales@akcp.com](mailto:sales@akcp.com)

Support: [support@akcp.com](mailto:support@akcp.com)

URL: <http://www.akcp.com>

### Dealer Name