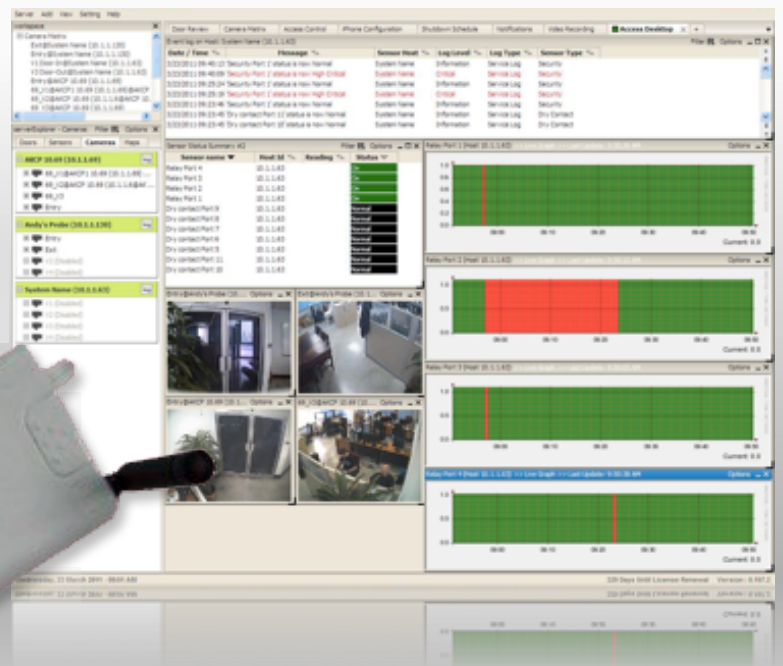


EDGE-180M USB Modem - EDGE-180M



EDGE-180M USB Modem

The EDGE-180M USB Modem provides global wireless access to the Internet and email on GSM/GPRS capable networks. With this modem, your securityProbe unit can connect to the Internet using your local GSM or GPRS service.

The EDGE-180M USB Modem takes DC power directly from its USB interface, so no charging device or external AC/DC adapter is required.

The EDGE-180M USB Modem is ready to use by simply connecting its USB interface to your securityProbe USB port.

Benefits of using the modem on your securityProbe

This EDGE-180M USB Modem is ideal for remote locations, where a securityProbe is being used to monitor and control critical environmental factors. After connecting to your securityProbe, you can deploy your preferred notification and alerting configurations as follows:

- Send SMS, MMS and Voice call alerts from the securityProbe base units.
- Use the "Heartbeat" feature built into the securityProbe to distribute SMS, email and HTTP data to remote web servers via your GSM network at pre determined times.
- Support for the EDGE-180M USB Modem is already incorporated into the securityProbe web interface in a convenient drop down menu for quick and easy setup.

EDGE-180M USB Modem's Main Features

Comes with a custom audio cable that connects the securityProbe to the EDGE-180M audio jack, enabling voice telephone alerts to be sent (this cable cannot be used on other modems). The data transfer speed depends on the service provided by your GSM operator. The EDGE-180M supports the following data-bearers:

EDGE (E-GPRS) multislots class 12 and mobile station class B Coding scheme

MCS 1-9 up to 236.8Kbps

GPRS multislots class 12 and mobile station class B Coding scheme 1-4

SMS Text / Data Messaging

Network Coverage

To confirm compatibility in your country and for a comprehensive listing of the GSM \ GPRS networks available and the frequencies that they use. Visit <http://www.mobileworldlive.com/maps/>

Technical Details

RF Power (Max)	2W (900 MHz) / 1W (1800 MHz) 2W (850 MHz) / 1W (1900 MHz)
Power Consumption	Standby 12-29 mA GPRS 310-690 mA Peak 2 A Idle 3 mA
Supply Voltage	Supply voltage nominal USB 5V
GSM	GSM Phase 2/2+

Interfaces

Connectivity	Standard USB 5V
SIM Interface	Standard SIM Card (3V / 1.8V)
Commands	AT Commands Supported
Audio	Analog Audio
Antenna	External Antenna Interface

General Specification

Size	9cm x 4.5cm x 1.5cm
Weight	30 g (0.53 oz)
Operating Temperatures	Operating conditions -25 ~ +65 °C Storage conditions -40 ~ +85 °C
Operating Humidity	Relative humidity range under normal operating conditions 20 ~ 75 % non-condensing Relative humidity range allowed 5 ~ 95 % non-condensing

Data Transmission Rates

The data transfer speed depends on the service provided by your GSM operator. The modem supports the following data-bearers:

EDGE	EDGE (E-GPRS) multislots class 12 and mobile station class B Coding scheme MCS 1-9 up to 236.8Kbps
GPRS	GPRS multislots class 12 and mobile station class B Coding scheme 1-4
SMS	Text / Data Messaging