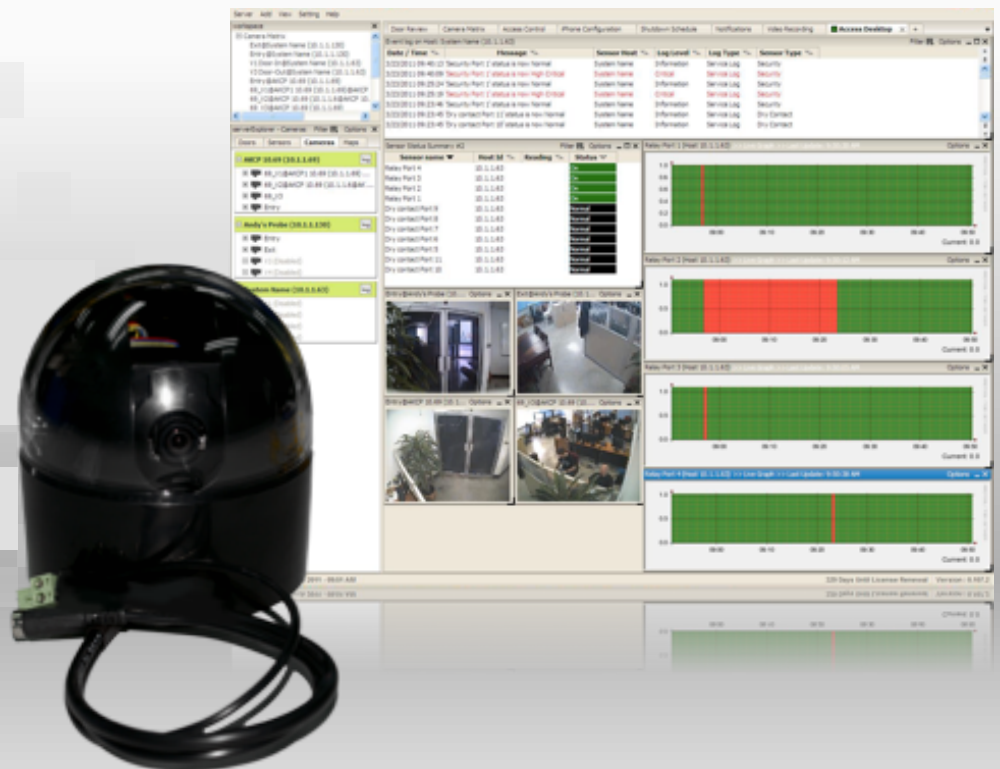


# High Definition Pan Tilt Dome Digital Camera - HD-PTDC



## High Definition Pan Tilt Dome Digital Camera

The AKCess Pro High Definition Pan Tilt Dome Digital Camera is designed to provide greater functionality to the securityProbe 5ESV and Door Control Unit devices. Not only can you monitor assets and infrastructure remotely, combining the AKCess Pro HD-PTDC Camera with a securityProbe 5ESV allows you to actually see any problems, from anywhere in the world.

The AKCess Pro HD-PTDC pictures are truly stunning even in low light conditions. The sensor is a 1/3"

interline CMOS. It has excellent low light sensitivity of 0.5 lux at f1.2.

Live full-color streaming video is available via the web interface, and up to 50 streams of video can be accessed simultaneously. Standard JPG format pictures are used, allowing the use of third party host tools to store and analyze the JPG pictures. All pictures are in the Standard JPG format and the Standard CIF picture size is 352 x 288

pixels or VGA (640 x 480). The pictures can be easily downloaded from the securityProbe into a local host.

## 4 Built-in Pan and Tilt Controllers

The securityProbe5ESV has 4 built-in pan and tilt controllers to control the high precision stepper motors in the Pan Tilt Dome Digital Camera, which can pan the camera left to right and up or down. This allows the Administrator to adjust the viewing angle of the camera over the network via the web interface. Administrator level access gives you control of the brightness and contrast of the image.

## Connectivity

Whether you are connecting the High Definition Pan Tilt Dome Camera to a securityProbe 5ESV or a AKCess Pro Door Control Unit. The connection type and port number is Universal.

Four Video ports on the rear of each unit are assigned to USB Digital Camera connectivity.



**Four High Speed USB 2.0 Ports  
are located on the rear of the unit.**

## Technical Specifications

### Camera Control

Remote pan and tilt (remote 330deg pan, 80deg tilt)  
Control of camera motor via web-interface (administrator only)  
Camera control port PT1-4, Pelco D RS485, 2 pins Terminal box.  
Precision, custom designed stepper motor

### Physical and Environmental

Dimensions (Ø x H) : 10.7 x 11.5 cm  
Weight : 0.8 kg  
Power : 9VDC, external  
Power consumption : 2.16 W  
Operating temp. range : 0 - 40 °C  
Operating humidity range : 10 - 80 % RH, non-condensing

## HD-PTDC Camera : Technical Specifications

<b>Image Sensor</b>	IR Range of 20 Meters 1/3" CMOS Auto White Balance 640 Pixels per Line with 625 per frame (interlaced)
<b>Picture Elements</b>	640 (H) x 480 (V) 352 (H) x 288 (V)
<b>Illumination</b>	0.5 Lux (Color), 0 Lux (Black & White)
<b>S/N Ratio</b>	< 48dB
<b>Power</b>	Powered by securityProbe
<b>Codec</b>	MJPEG
<b>Lens Type</b>	Fixed
<b>Focal Length</b>	3.6mm