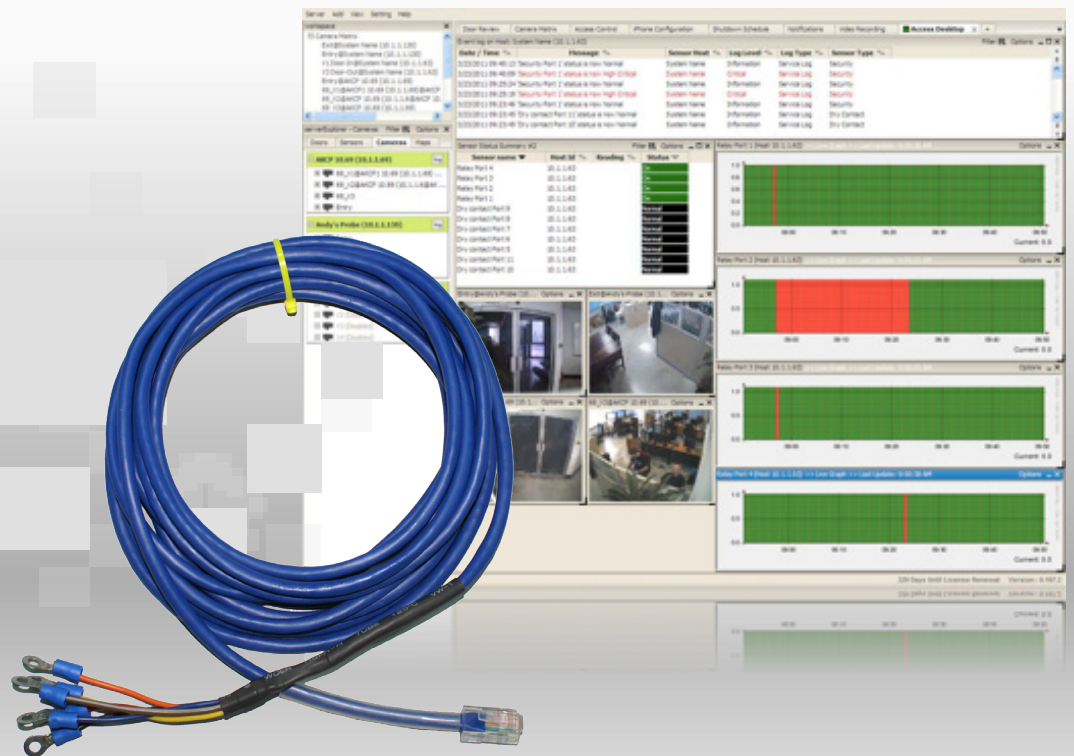


5DCS Dry Contact Sensor - 5DCSXX



5DCS Dry Contact Sensor

The 5DCS Dry Contact sensor with an ALARM or NORMAL indication in the software enables up to 10 dry contacts on a sensorProbe2. Dry contact sensors are user definable and can be used to detect many different inputs such as UPS status, security systems or air conditioning status.

SNMP traps can be sent when the sensor is in a critical state. When an alarm condition is active the description and location of the fault can be sent via an email or SNMP trap.

The many benefits of using a sensorProbe2 device are maintained and all of the dry contact sensors connected can be configured via the sensorProbe2's built in web interface.

5DCS Dry Contact Sensor's Main Features

- Powered by the sensorProbe2. No additional power is required.
- The DCUPGSMP2 unlock code is entered into the sensorProbe2 then will detect the presence of the two 5DCS dry contact sensors.
- Up to 2 5DCS per sensorProbe2 for a total of 10 dry contact inputs.
- Full autosense including disconnect alarm
- The 5DCS OID is: 1.3.6.1.4.1.3854.1.2.2.1.18.1.3.X

Technical Specifications

Measurement range : Alarm or Normal

Communications cable : RJ45 jack to sensor using UTP Cat 5 wire

Max extension cable : 305m (1000 ft.) with approved low capacitance shielded cable or UTP

Input voltage range : 0 to 5 volts

Normal Input Voltage : Settable under software

Sensor type : Open / Closed contact switch on sensorProbe2 base units only

Current Range : Can sink up to 20 mAmps

Measurement Rate : Multiple readings every second